



Lesson Sequence



1. Know the differences between seeds and bulbs



2. Design an experiment to find out what plants need to grow



3. Describe what plants need to grow and stay healthy



4. Describe the life cycle of a plant



5. Observe and record the growth of plants over time



6. Understand that plants adapt to suit their environment

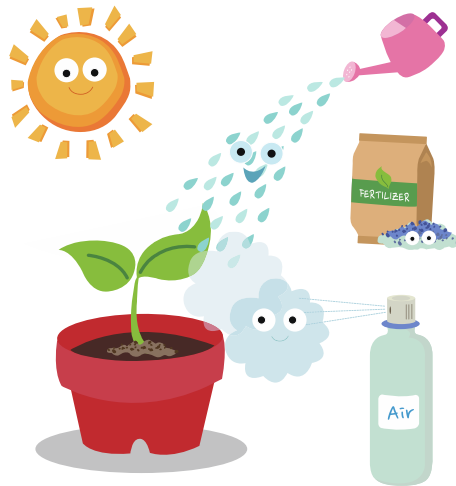
What Plants Need to Grow

Plants need **water** to survive. Plants get water through their roots.

Plants need the right **temperature** to grow.

Plants need **sunlight** to help them grow and make their own food.

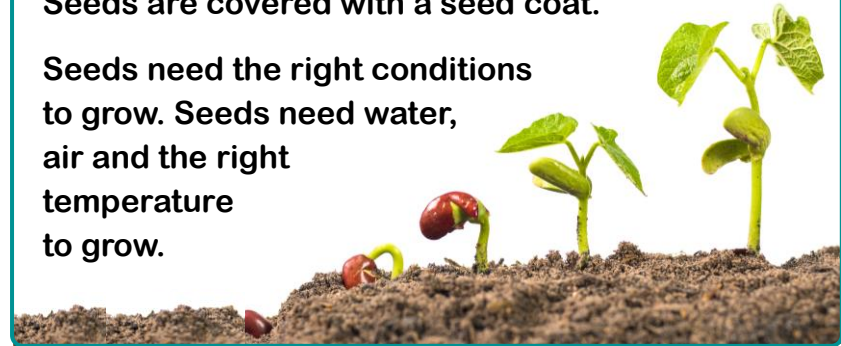
Plants need **room** to grow. Plants need time to grow. It can take days, months or even years for them to grow.



Life Cycle of a Plant

A plant **germinates** when it starts to grow. Inside a seed/bulb is the baby plant. Seeds are covered with a seed coat.

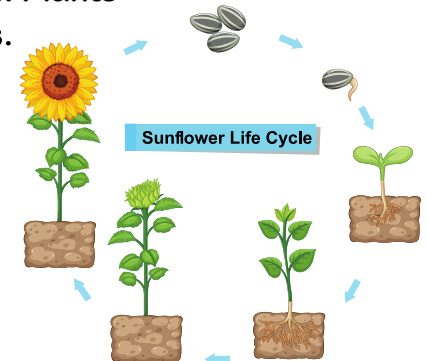
Seeds need the right conditions to grow. Seeds need water, air and the right temperature to grow.



Life Cycle of a Plant

Plants begin life as **seeds or bulbs**. They need soil, air and water to grow. Plants grow into young plants called **seedlings**. Plants grow **flowers and fruits**.

These produce seeds. When the plant is pollinated, the seeds find their soil. The process starts again!





Explain why each point below is important to help a plant grow.

Water

Temperature

Light

Space and time

Circle what plants need to grow.

garden watering can

water room air

time right temperature

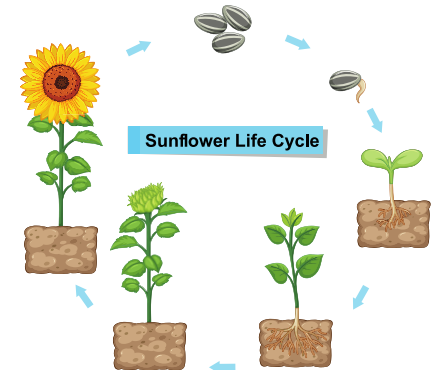
 light



Explain what happens to plants to help them reproduce.

What do plants need to grow?

What happens to a plant when it dies?





Rocket Words

photosynthesis	the process in which green plants use sunlight to make their own food
carbon dioxide	plants use this to make their own food in a process called photosynthesis
oxygen	one of the main gases that make up air
glucose	a sugar that plays a vital role in the metabolism of most living organisms
pollination	the process that allows plants to reproduce
germination	the process by which a plant grows from a seed
crop	a plant or plant product that is grown and harvested
forests	places where there are mostly trees